

## Instructions for updating the printer firmware in chipless, method 1

Compatible Epson Printer Models: XP-340; XP-341; XP-343; XP-345; XP-352; XP-355; XP-440; XP-441; XP-442; XP-445; XP-446; XP-3100; XP-3105; EW-452A; XP-4100; XP-4101; XP-4105; XP-640; XP-645; XP-6000; XP-15000; XP-15010; EP-50V; WF-C5210; PX-S884; WF-5290; WF-7210; WF-7211; WF-7215; WF-7218; PX-S5080

For updating the printer firmware into a chipless one you need:

1. INKCHIP Firmware Program compatible with your printer model.
2. INKCHIP Activation Program compatible with your printer model.
3. A computer with a Windows operating system and Internet access.
4. USB cable
5. INKCHIP activation key.

### STEP 1.

Download INKCHIP Firmware and INKCHIP Activation for your printer model from [inkchip.net](http://inkchip.net). Unpack the ZIP archives of these programs.

### STEP 2.

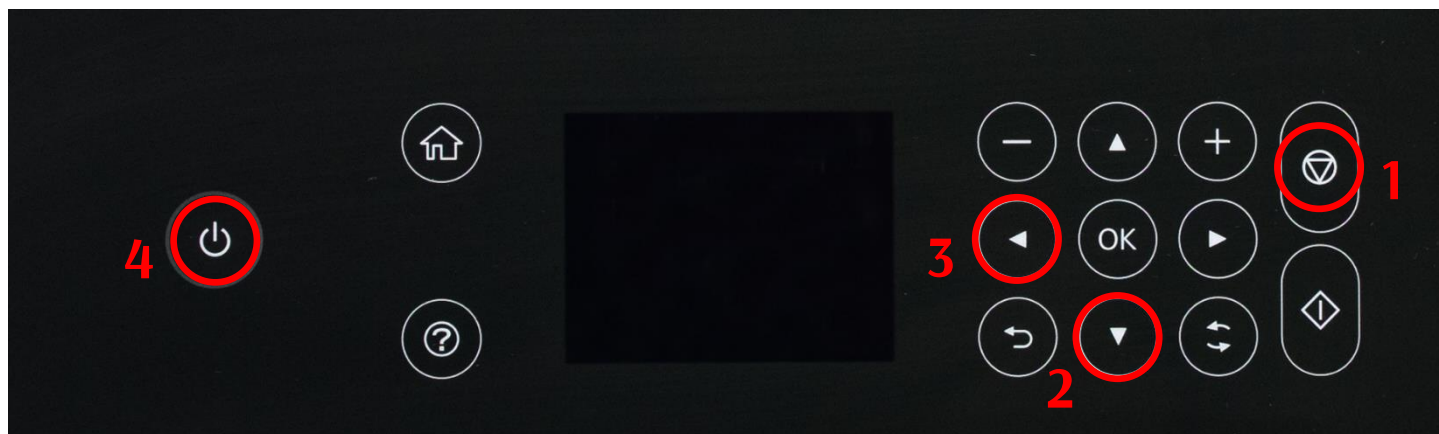
Turn off your printer using the power button and wait at least one minute.

### STEP 3.

Connect the printer to a Windows computer using a USB cable.

### STEP 4.

Enter the printer in special mode for firmware. To do this, simultaneously hold down the following buttons on the printer control panel: "CANCEL" (1) + "DOWN ARROW" (2) + "LEFT ARROW" (3) + "POWER BUTTON" (4). Hold this combination for 3-5 seconds until "Firmware Update Mode" or "Program Update Mode" appears on the printer display (depending on the specific printer model) and release all buttons.

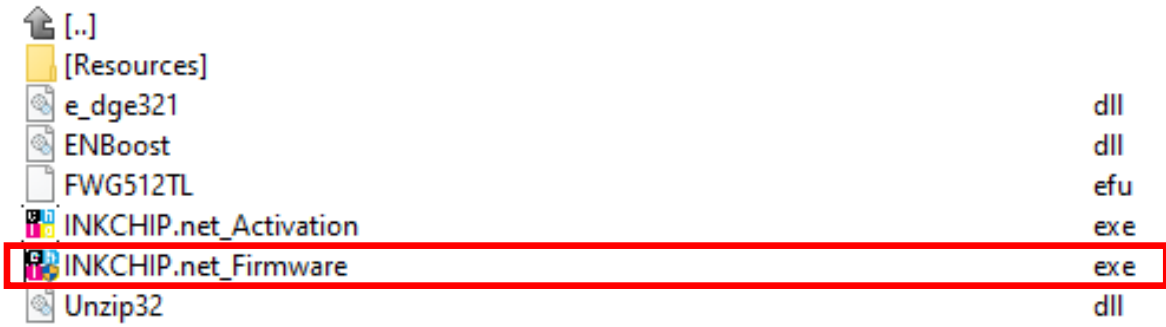


Please note that the inscription on the display must be in white font. If the text is red, this is an incorrect mode, turn off the printer, and then repeat the procedure for entering the printer in firmware mode.

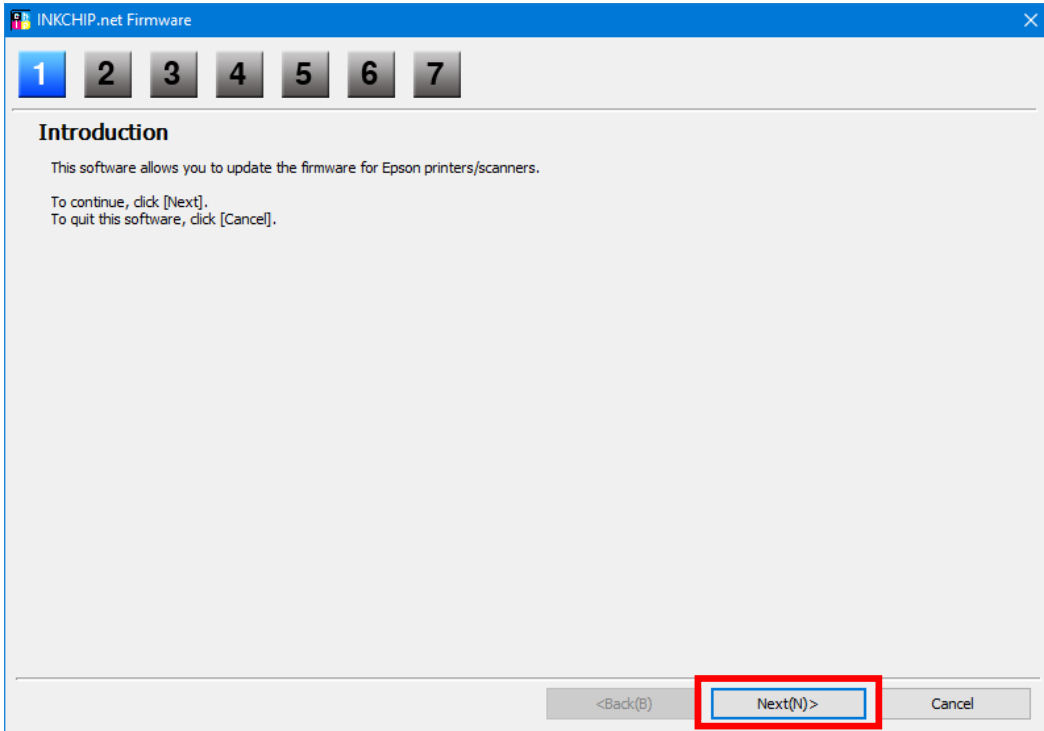


STEP 5.

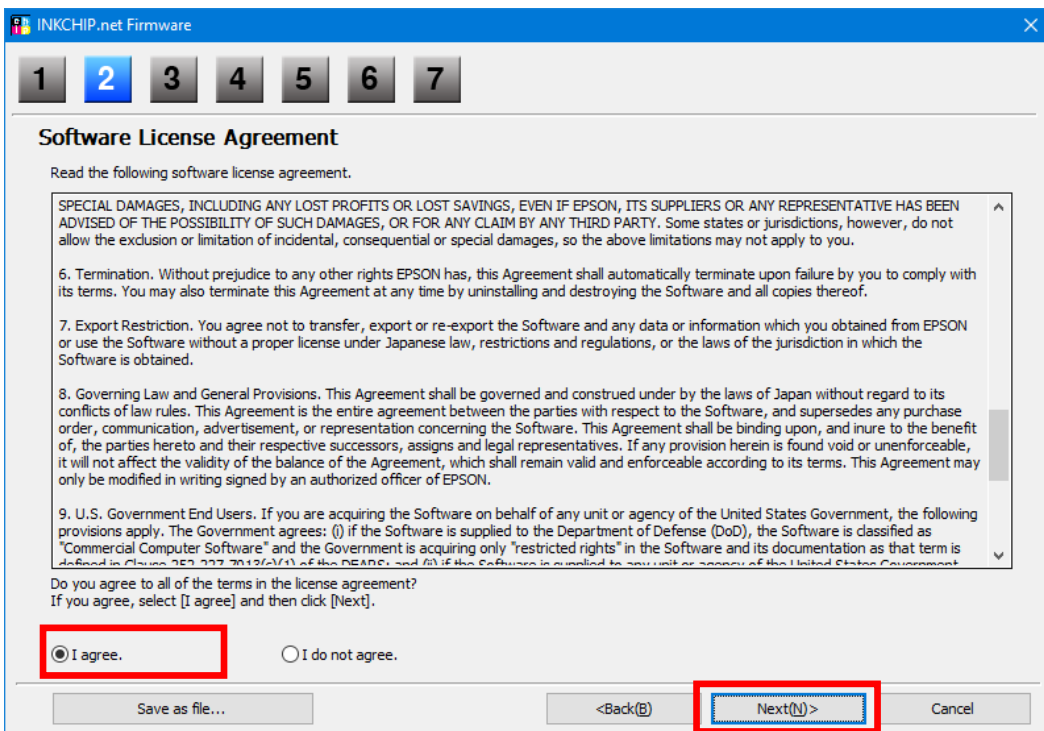
Launch the INKCHIP Firmware program on your computer.



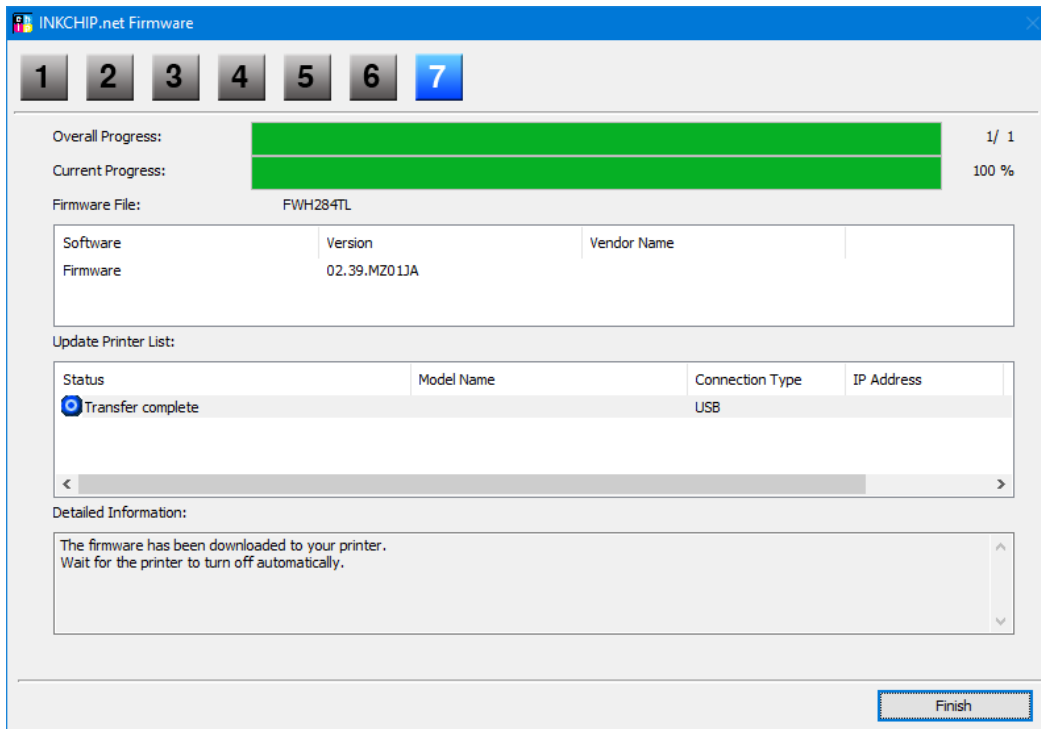
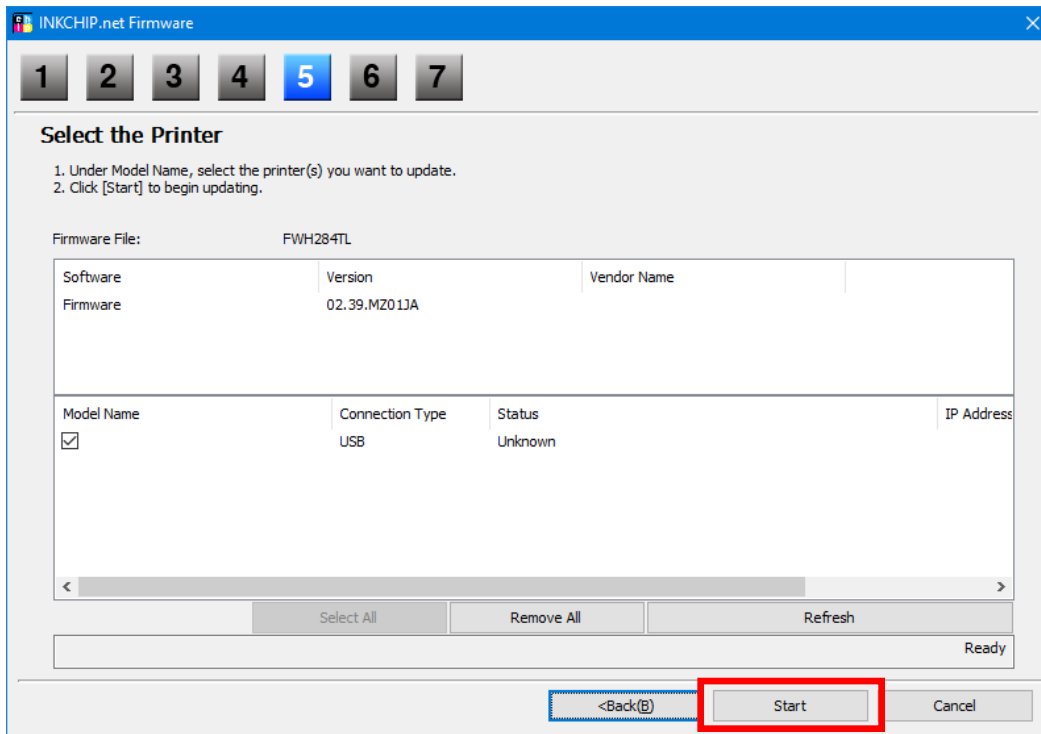
Read the introduction and click Next.



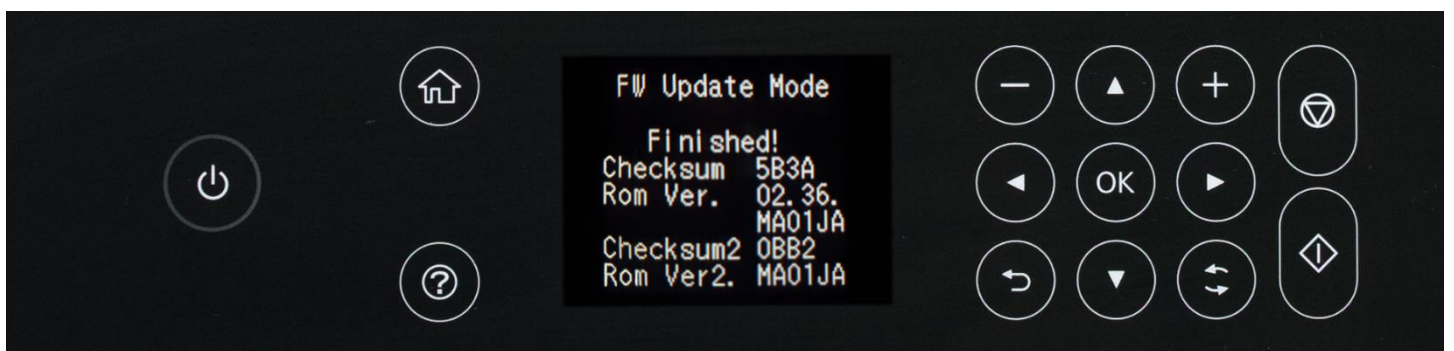
Read the license agreement, set the marker opposite "I agree." and click on the button next.



Click the Start button and accept the warning about updating the firmware.

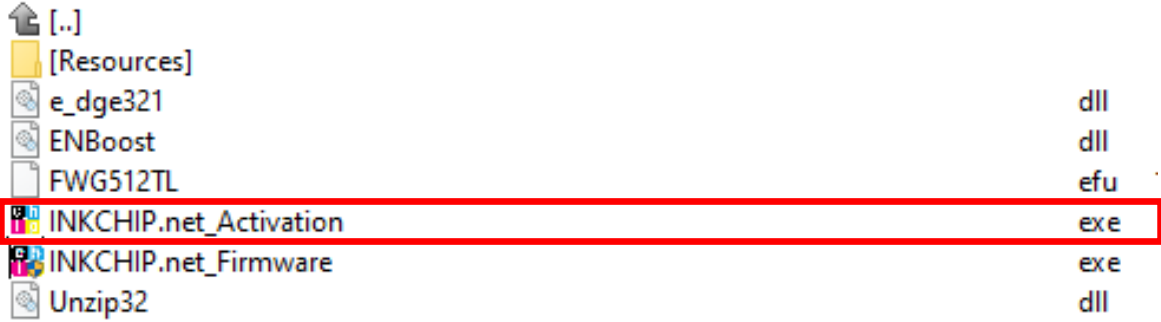


At this point, chipless firmware will be downloaded to the printer. The completion of the download process on to the printer will be indicated by the word “FINISHED” on the printer display. After that, press the “OK” button on the control panel and the printer will turn off.



STEP 6.

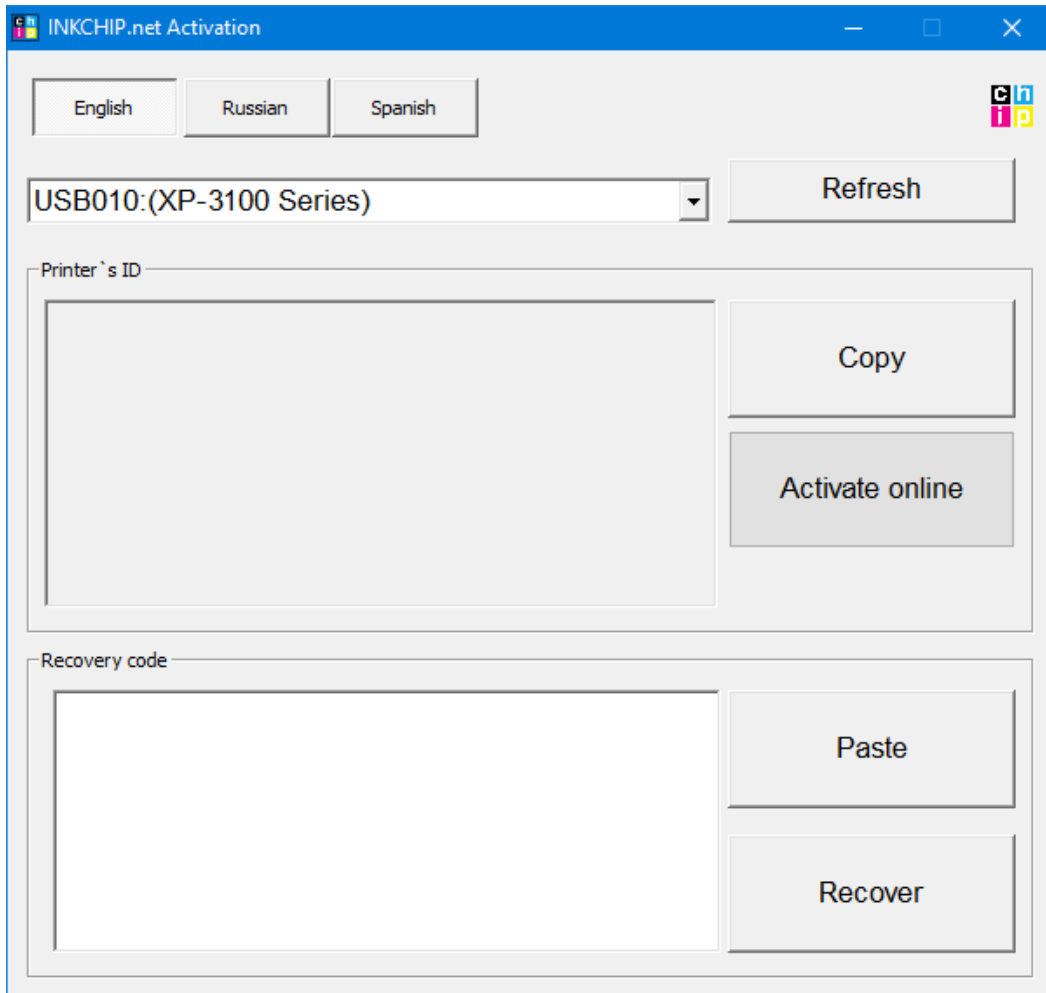
Turn on the printer in normal mode (using the power button) and run the INKCHIP Activation program on the computer.



STEP 7.

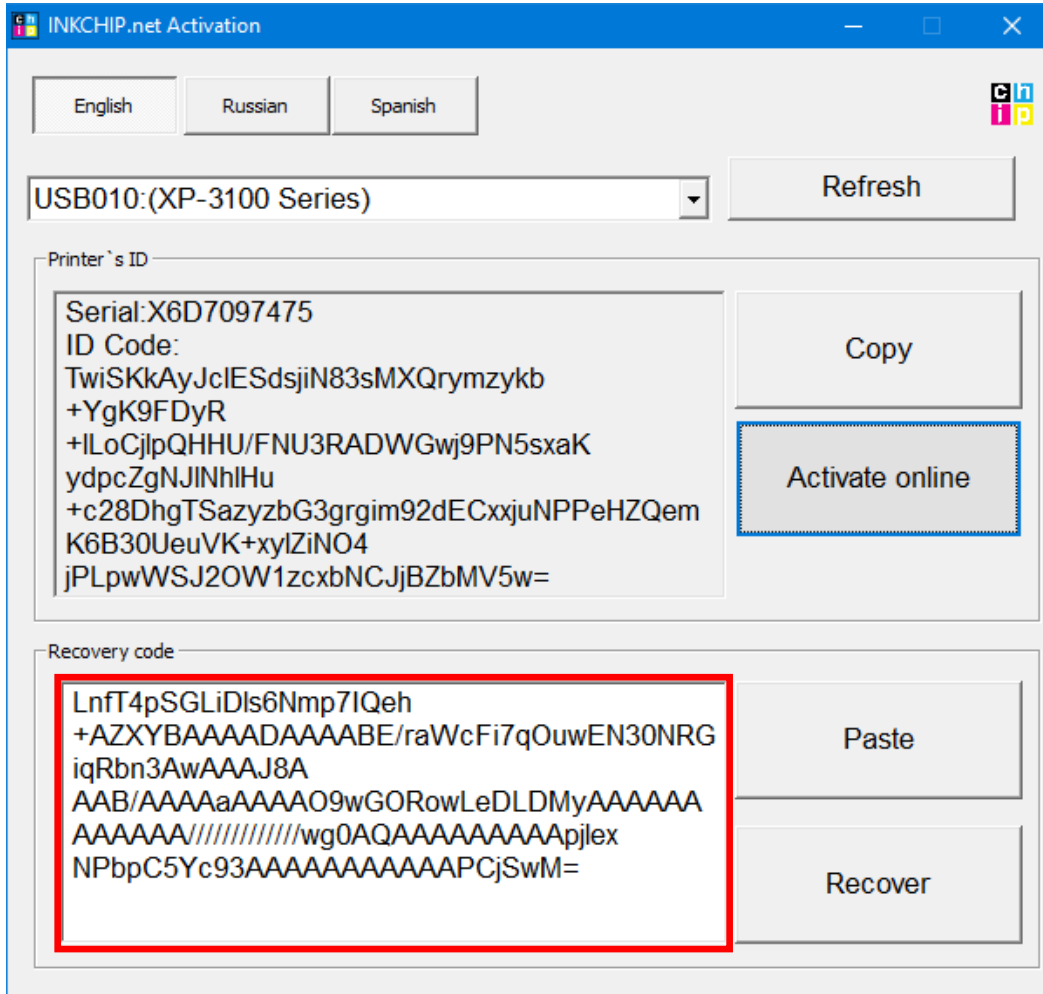
In INKCHIP Activation select your printer model and click the Activate Online button. In the window that opens, enter the activation key and click OK. The program will send a request to the inkchip.net server and activate chipless firmware.

An activation key can be purchased at inkchip.net. The key has a limited validity period and is suitable for only one specific printer.



STEP 8.

Save the firmware recovery code, which will be generated in the appropriate program window. This code will be needed if necessary, to restore chipless firmware.



STEP 9.

Turn off the printer using the power button. The device is flashed into a chipless version.

STEP 10.

Install the supplies in the printer and turn it on. The printer will be ready for use.

**IT's IMPORTANT!** Do not turn on the printer after activating the firmware without consumables installed - this may lead to the failure of the print head of the printer.